

**HANDITRAN**



**MEETING ARLINGTON'S SPECIAL TRANSPORTATION NEEDS SINCE 1981**

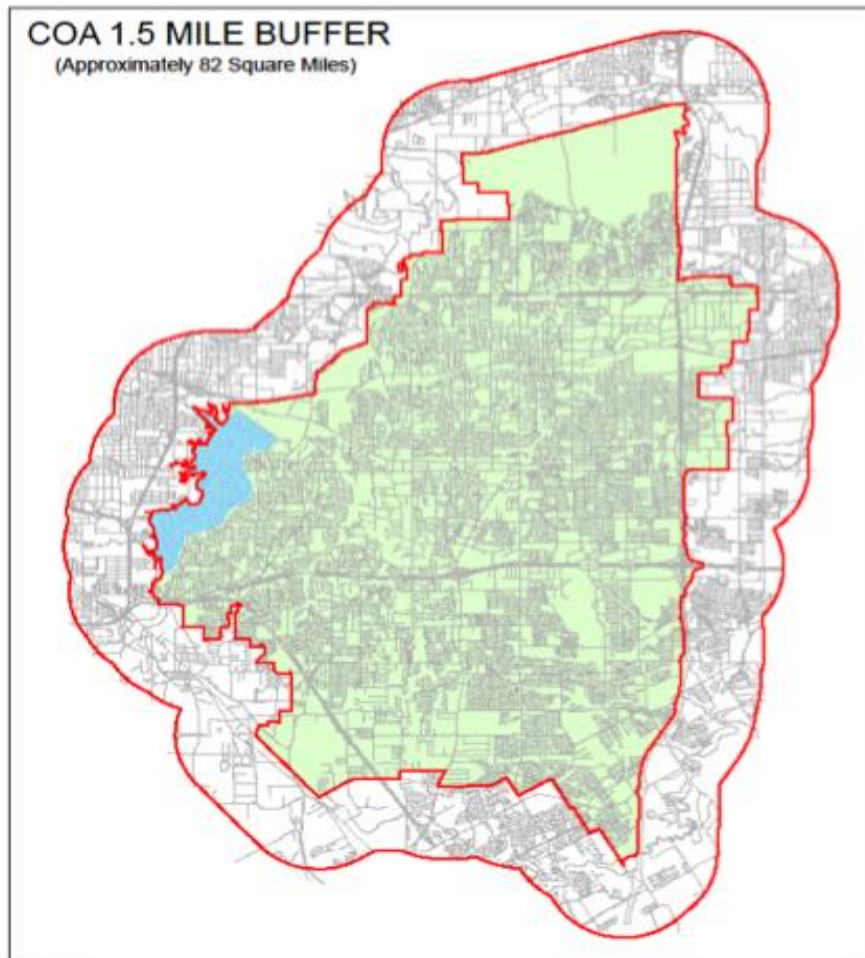
The Intellectual and  
Developmental Disabilities  
Council of Tarrant County

February 1, 2018

# HANDITRAN



## MEETING ARLINGTON'S SPECIAL TRANSPORTATION NEEDS SINCE 1981



### Service Area

- Arlington
- Pantego
- Up to 1.5 miles into surrounding cities



DISCLAIMER: This data has been compiled by The City of Arlington using various official and unofficial sources. Although every effort was made to ensure the accuracy of the data, we make no guarantee to grant or implied.

City of Arlington  
Community Development & Planning  
1 Mapwood Community College Plaza  
Ft. Worth, TX 76102



## Part Two: Demand-Response Services



**HANDITRAN**



**MEETING ARLINGTON'S SPECIAL TRANSPORTATION NEEDS SINCE 1981**

- Serves the City of Arlington and 1.5 miles past the City's border
- No limit to trip purpose (medical, essential personal, work and recreational)
- To qualify, passengers must have a disability and/or be 65 years or older
- Eligibility requires an identification card, a completed application and a signed document from a physician attesting to disability status. \$10 application fee
- Operates Monday- Friday: 7 a.m.-10 p.m. and Saturday: 8 a.m.-9 p.m.
- Reservations are taken on the day of service and up to 14 days in advance

## Part Two: Demand-Response Services



**HANDITRAN**

**MEETING ARLINGTON'S SPECIAL TRANSPORTATION NEEDS SINCE 1981**



- One leg of each trip must be an Arlington street address
- Connects with the TRE at established transfer points
- \$2/one-way single ride or \$55/monthly pass
- Fleet: 20 buses and 10 contracted taxis
- Completed over 130,000 trips in FY 12
- Average on time performance of 97%
- For additional information, call 817-459-5390