

It is important that you call to get your loved one on the interest lists as they have lengthy waits. You do not have to qualify to be added to the interest list. The sooner you call, the better.

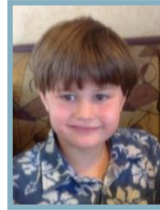
Note: MHMR Tarrant staff will be contacting every two years to ensure that you or your loved one would like to remain on the interest list. Initial add-on to the HCS and TxHmL lists can take 15-20 minutes.

Home and Community Based Services (HCS)

- **For:** People of all ages diagnosed with an intellectual disability who are living with their family, in their own home, or in other community settings, such as a small group home.
- **Service Delivery:** People choose an eligible provider for a variety of services. Local authorities like MHMR (often called community centers) provide service coordination.
- **Call:** (817) 569-4140

Texas Home Living (TxHmL)

- **For:** People of all ages with an intellectual disability, related condition, or both, who live with their families or in their homes.
- **Service Delivery:** People receiving TxHmL services work with a service coordinator from the local authority like MHMR (sometimes called a community center) to plan services to help them continue living in their own or their family's home.
- **Call:** 817-569-4140



Medically Dependent Children's Program (MDCP)

- **For:** Children below 21 who are at risk of placement in a nursing facility because of their complex medical needs and who also qualify for nursing facility services. Children 18 or younger must live with a family member or a foster family that has no more than four children that are not relatives. All assessments, reassessments and ongoing case management for MDCP will be completed by the STAR Kids and STAR Health MCOs, rather than Texas Health and Human Services Commission (HHSC) case managers and nurses.
- **Service Delivery:** Children work with their DADS case manager to choose a Home and Community Support Services Agency (HCSSA) to provide basic services.
- **Call:** 1-877-438-5658.



(CLASS)

- **For:** People of any age diagnosed with a related condition. CLASS is a cost-effective alternative to placement in an institution for people with disabilities. (Note: A related condition is a disability, other than an intellectual disability, that is acquired before age 22 and affects functioning in daily life.)
- **Service Delivery:** People receiving CLASS services choose one agency to provide case management and another direct service agency to provide all other CLASS services.
- **Call:** 1-877-438-5658.



- *Source: HHSC website*

Crisis, Referrals & Point of Entry

24/7 Crisis Line

- 817-335-3022
- 1-800-866-2465 (Toll-free)
- 817-569-4488 (TTY-TDD)

Behavioral Health Services Mental Health and Substance Use Disorder

- 817-335-3022
- 1-800-866-2465 (Toll-free)
- 817-569-4488 (TTY-TDD)

Disability Services Intellectual and Developmental Disability (IDD)

- 817-335-3022
- 1-800-866-2465 (Toll-free)
- 817-569-4488 (TTY-TDD)

Early Childhood Intervention

- 817-446-8000
- 1-888-754-0524

Learn more at:

www.MHMRtarrant.org

MHMR Tarrant on Facebook
[Facebook.com/MHMRtarrant](https://www.facebook.com/MHMRtarrant)